

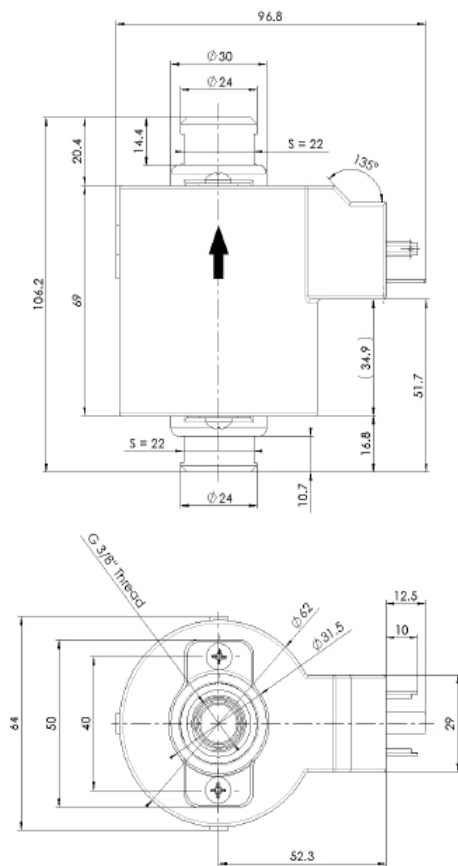
**SOLENOID PUMPS**

# EBQ18

**TECHNICAL DATA**



**DIMENSIONS**



**NOMINAL RATED DATA**

|                       |                             |
|-----------------------|-----------------------------|
| Max. pressure         | 1.8[bar]                    |
| Max. flow rate        | 170[l/h]                    |
| Max. suction height   | 2[m]                        |
| Viscosity range       | 1...600[mm <sup>2</sup> /s] |
| Filter                | Mesh 100                    |
| Tension               | 230[V]<br>(110V)            |
| Frequency             | 50, 60[Hz]                  |
| Electrical connection | DIN 43650 A                 |
| Hydraulic connection  | Internal G3/8" thread       |
| Power                 | 120[W]                      |
| Weight                | ~1110[g]                    |
| Temperature           | 1...50[°C]                  |
| Insulation            | Class H<br>Class 1          |
|                       | 100% ED / 20 [°C]           |

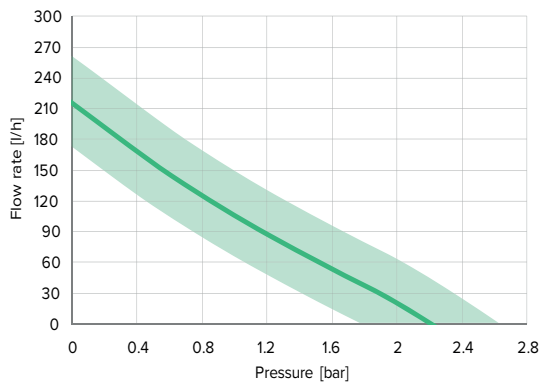
SOLENOID PUMPS

**EBQ18 230V**

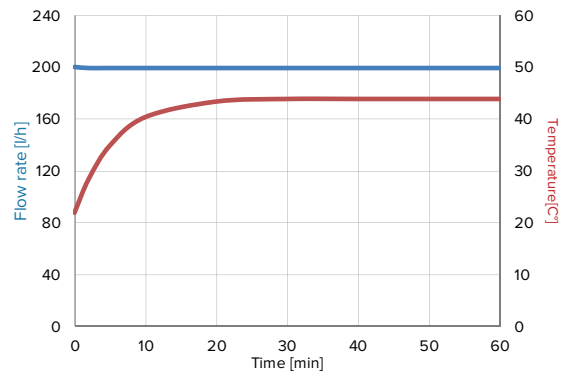
TECHNICAL DATA



**PERFORMANCES**



**OPEN FLOW & TEMPERATURE**



Tested with 20°C of water at ambient temperature

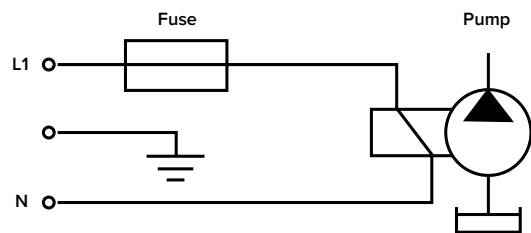
**ACCESSORIES**



Rubber mounting

Large choice of materials & options

**ELECTRIC WIRING DIAGRAM**



Please refer to instruction manual for more installation details. For more information, visit our website : [www.gotec.ch](http://www.gotec.ch)

Certifications

